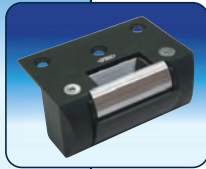


PRODUCT INFORMATION

RIM MOUNT ELECTRIC DOOR STRIKE



PRODUCT DESCRIPTION

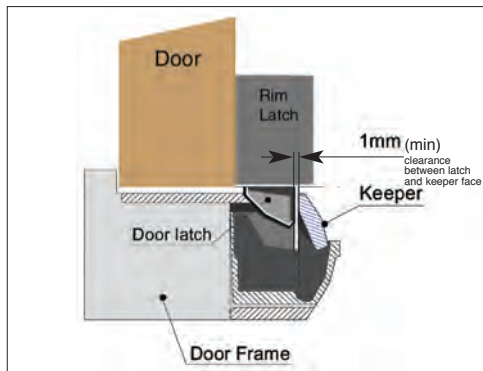
The FES15/15M (monitored) range of electric door strikes are designed to provide simple low cost, high quality electric locking solutions for “RIM” or surface mount mechanical door locks. The devices can be interchanged power to lock (P.T.L.) or power to release (P.T.R.) at site and can be supplied with door lock tongue monitoring (FES15M). Change over from power to lock (P.T.L.) to power to release (P.T.R.) is carried out in an identical manner to that of the FES10 strike, “Barbell”® reversal.

FES15 - identical to the FES15M but without monitoring features

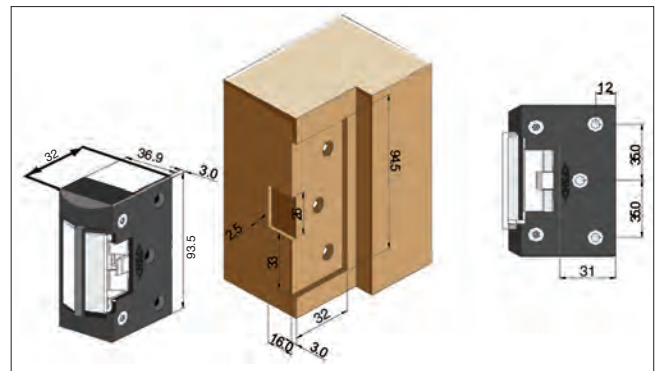
FES15M

- 12vDC & 24vDC Dual Voltage Continuously Rated Coil
- Simple power to lock/power to release interchange
- Weather resistant
- 5 year warranty
- Monitoring of door latch 24v/100mA contacts (FES15M)
- Superior holding strength
- Surface mount for “RIM” locks
- Easy installation

PART No.	FES15M	FES15
FUNCTION	Surface mount electric strike for rim latch control	
HOLDING FORCE	Up to 500kgs	
VOLTAGE/CURRENT	Dual voltage 12vDC/200mA 24vDC/100mA	
APPROVALS	2 hour fire rating	
MONITORING	Door lock tongue	Non monitored
SIZE	L= 93.5 x W= 40 x D= 32mm	
WEIGHT	450gs	
PACKING PER BOX	25 per box (10kgs)	



Mechanical door lock configuration



Timber door frame cut out